

# OMNISCOP DREAM



**STEPHANIX**  
MEDICAL IMAGING SOLUTIONS



Omniscop DREAM, surgical C-arm with Flat Panel Detector, is suitable for both hip and aortic prosthesis procedures. Any kind of surgery is possible thanks to our wide range of generators and flat detectors.



### COMFORT OF USE

The ergonomic design of the C-arm offers appropriate opening and positioning, from bariatric to extremities surgeries. The total size of the system has been designed to optimize the space inside the operating theatre.



The motorised variable height of the C-arm, the manual movements and the lateral handles on both sides, ensure an optimal positioning of the system. Each release lever is marked with a colour code corresponding to one movement.



# OMNISCOP DREAM







**FLAT PANEL DETECTOR**  
**A-SI, AMORPHOUS SILICON**

8x8 or 12x12 inches, two available sizes to fit with the specificity of each surgery.



**DOSE REDUCTION**

Half-dose exam, programmable and easy to reach in one-click. Removable grid.



**POSITIONING LASER**

Located on both tube and detector sides, for more precise centring.



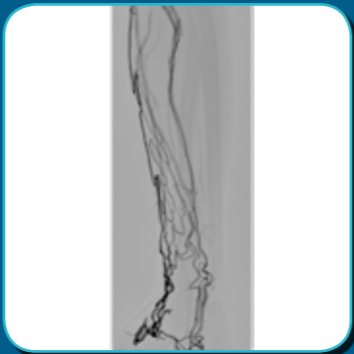
**WIRELESS FOOTSWITCH (OPTION)**

To replace the standard wired footswitch.



**ADVANCED POST-PROCESSINGS**

Adapted to each preprogrammed anatomical protocol. For a reproducibility of image quality.



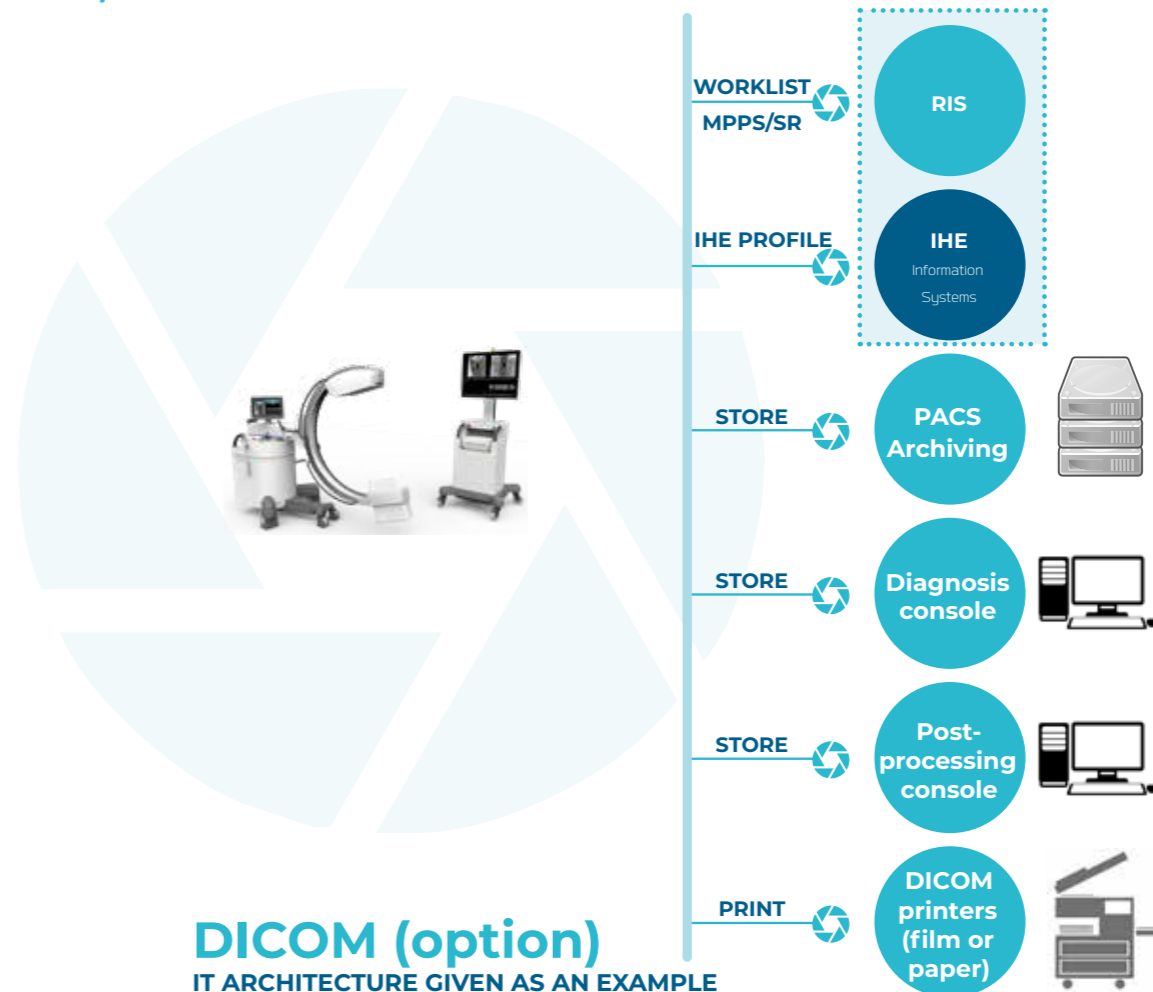
**DSA AND SPECIFIC MEASUREMENT TOOLS (OPTIONS)**

To meet all interventional vascular examinations needs.

USE



RF, DX AND XA MODALITIES



# LATEST GENERATION OF DIGITAL RADIOGRAPHY SOLUTIONS: INTEGRATED, DYNAMIC, PORTABLE, WIRED AND WIRELESS DETECTORS.

**D2RS**  
Dynamic Imaging



**XTREME**  
General X-Ray Rooms



**MOVIX SERIES DREAM**  
Mobile X-ray units



**OMNISCOPE DREAM-S**  
Surgical C-arms



**STEPHANIX**  
MEDICAL IMAGING SOLUTIONS

Head office : 10, rue Jean Moulin  
Z.I. du Bayon - 42150 La Ricamarie - FRANCE  
Tel. +33 4 77 47 81 60 - Fax: +33 4 77 37 55 19  
export@stephanix.com

[www.stephanix.com](http://www.stephanix.com)